

Our Advantages

All industrial steel packaging are taken back free of charge throughout the whole of Germany

Fillers are exempted from the direct obligation to take back their packaging

Return of packaging containing hazardous substances



Reconditioning of empty packaging to specific scrap grades

The German steel industry warrants material recycling

Material flows documented upon demand by public authorities

Fulfilment of the legal requirements set in the German Packaging Ordinance (VerpackV) and Recycling and Waste Management Law (KrW-/AbfG)

Low licence fees, calculated on a cost basis

Settlement based on actual annual volumes

Variable contract durations

Non-profit-oriented system

Consultation and service for fillers and final consumers

Annual audits of the quality management system

System splitting between KBS and other reclamation systems under the German Packaging Ordinance

KBS

Our Associates

Rasselstein
Ein Unternehmen von ThyssenKrupp Steel



Rasselstein GmbH



Verband Metallverpackungen e.V.



Bundesvereinigung Deutscher
Stahlrecycling- und
Entsorgungsunternehmen e.V.

Our Systems



Our Company

Kreislaufsystem Blechverpackungen Stahl GmbH

Jahnstrasse 3
40215 Düsseldorf

Telefon 0211 23 92 28 0
Telefax 0211 23 92 28 17

E-Mail info@kbs-recycling.de
Internet www.kbs-recycling.de

Sep-09

KBS

Kreislaufsystem Blechverpackungen Stahl



Return System
of Used Industrial
Steel Packaging



Our Material

Every year more than half a million tons of steel are converted into packaging in Germany. Besides economic efficiency, product and environmental protection, recyclability is an essential criterion when opting for steel as a packaging material.

With steel, environmental responsibility and economic sense are no contradiction. Steel is the perfect example of a traditional material demonstrating continuous innovation in all its applications.

Our Offer

Through a license contract with KBS, fillers are exempted from their legal obligation to take back packaging sold in the German market. This task is taken care of by KBS, who, moreover, guarantees the effective material recycling of used industrial packaging.

Following systems are available:

> KBS techPack

for packaging without marking or marked with the following symbols:



On a case-by-case discussion:



> KBS extra

for packaging marked with the symbols:



The selection of the relevant system is simply made by reference to the categories of danger defined in the Directive on Dangerous substances, as per R phrases. KBS will advise and inform its partners as to the correct classification of their products within the system.

> KBS plus

for collecting and disposal of packaging by KBS at licensee's option.

KBS

Our Licensees

More than 200 companies from different industry sectors, predominantly concerned with chemicals and technical applications, have joined the KBS system as licensees. This is because they feel committed to the idea of "responsible care" and, moreover, want to be sure that the steel packages emptied of residues by their customers will undergo disposal and recycling in accordance with environmental legislation.

KBS has been able to establish itself in the market as a reliable system and is a recognised contract partner for fillers, dealers, and importers.

Our Licence Fees

KBS symbol takers enjoy the advantage of joining a system that operates economically, keeps administrative costs at a low level and moreover, as a non-profit company, makes its licensees to benefit from the surpluses of the system.

System	KBS techPack			KBS extra	
	Year	Tinplate	Blackplate	Plastic	
		€/t	€/t	€/t	€/t
1998		127,50	104,60	357,90	.
1999		122,50	107,40	357,90	.
.	
2001		117,50	107,40	357,50	345,00
2002		105,00	105,00	345,00	345,00
.	
2005		97,50	97,50	345,00	345,00
.	
2009		63,00 *	63,00 *	175,00 *	345,00

* 3 years contract only

KBS licensees announce their projected packaging quantities for the systems in question at the beginning of a calendar year. Differences between the projection the actual quantities sold are reimbursed or invoiced accordingly the following year.

KBS

Our Recycling Partners

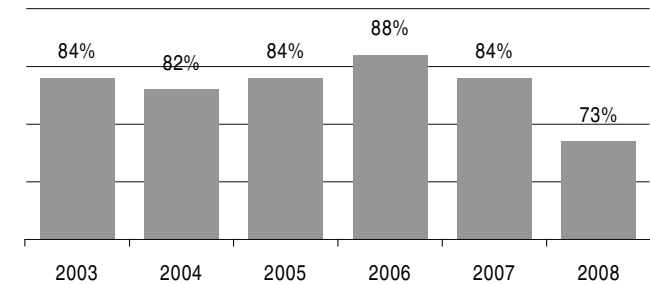
KBS operates in a global bring system throughout the whole of Germany. On the one hand, this ensures that license fees are kept low for licensees and, at the same time, that the level of empty packages returned by the final user will remain high.

KBS plus offers licensees the additional service of taking back used packaging at the collection point of their customers.

Around 300 collection centres, 120 of which are processing centres linked contractually to KBS, are closing the loop. KBS co-operates exclusively with companies that are certified and approved by public authorities, guaranteeing that legal requirements of environmental legislation will be met. On-going checks by KBS ensure a constant high standard of quality.

Our Performance

Since its launch, established in 1993, KBS has achieved above average packaging return rates, thereby distinguishing itself clearly from other competing systems in the market.



In spite of the high utilisation of system services, KBS has been able to reduce the licence fees over the last few years - without reducing reliability and orderly disposal of used industrial packaging.

KBS